



### Standard Product Features

- Full color LED indicators including pure white
- Improved thermal dissipation
- Standard and custom legends (no mins, no set up fees)
- Significant power reductions, PKU MS consumes with all LED's active 107mA @ 12V
- Simplified CAN messaging using CANconnect software to control multiple LEDs within single message
- Supply Voltage 12-24V
- Brighter LED's
- LED backlit icons
- Relegendable Buttons
- Multicolor indicator rings
- Sealed IP68
- Vertical or horizontal mount
- CRM or Designer, ECS firmware options

### Improved Product Features

with Designer Firmware

- 256 step brightness control for each color
- New LED visual effects (blink, pulse, spin, ripple)
- On/Off, momentary, toggle, scroll/step functions programmable for each key
- Autonomous operation (key press causes LED to change state without feedback from external device)
- NMEA2000 bus compliant (support ISO requests, address claim, binary status 127501 and binary control 127502 messages)

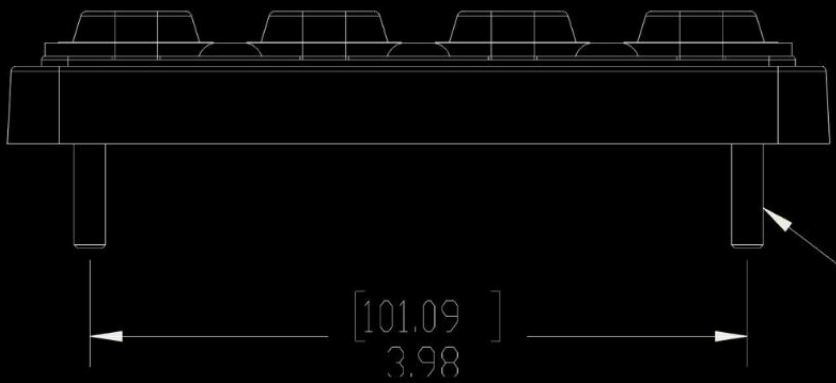
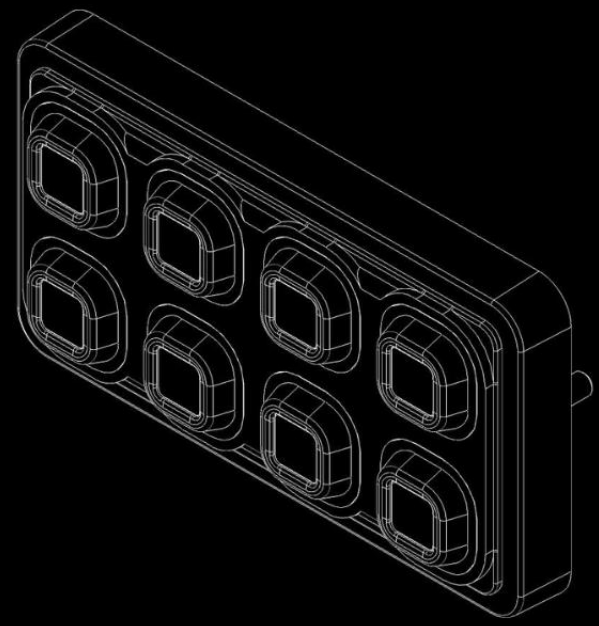
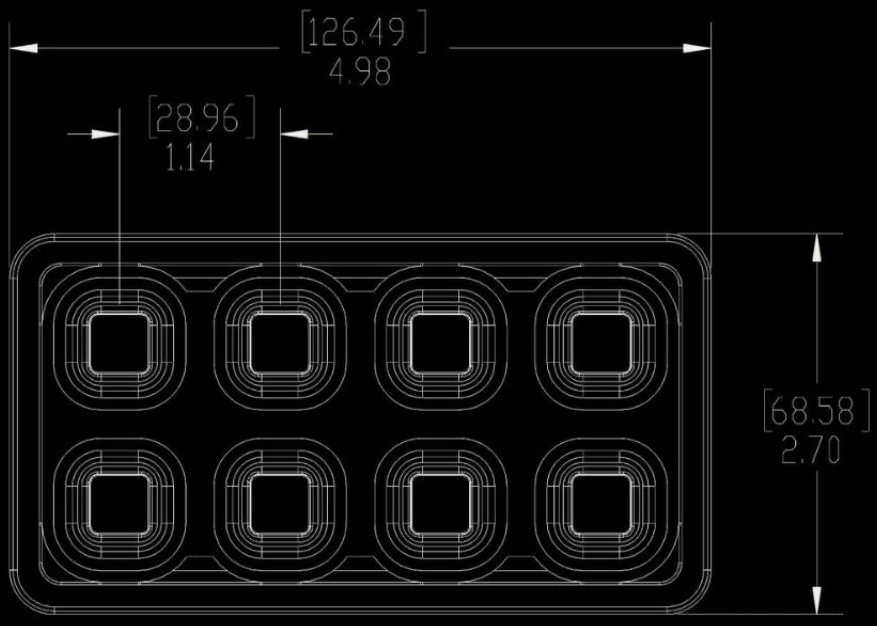
### Protocols & Accessories

- CAN Open
- J1939
- NMEA2000
- Free Software Utility
- Accessories Catalog
- Connector options include:  
Deutsch, and more

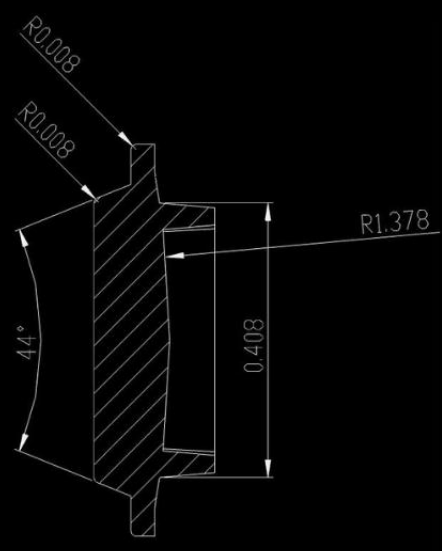
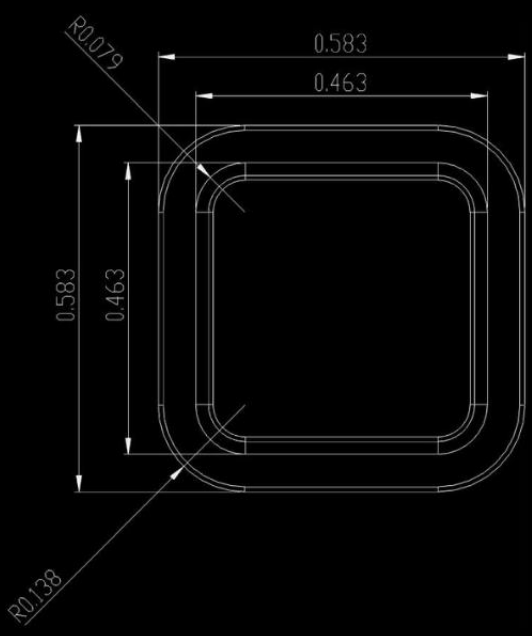
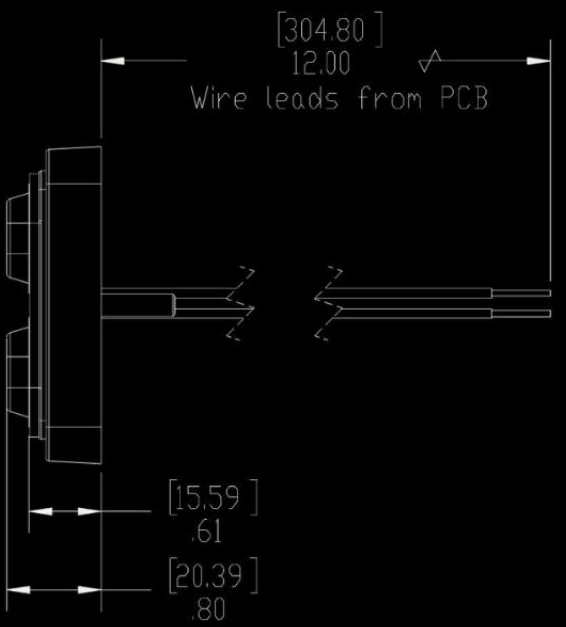


# POWERKEY ULTIMATE

# PKU 2400MS



#10-32 X 1.00"



SECTION A-A